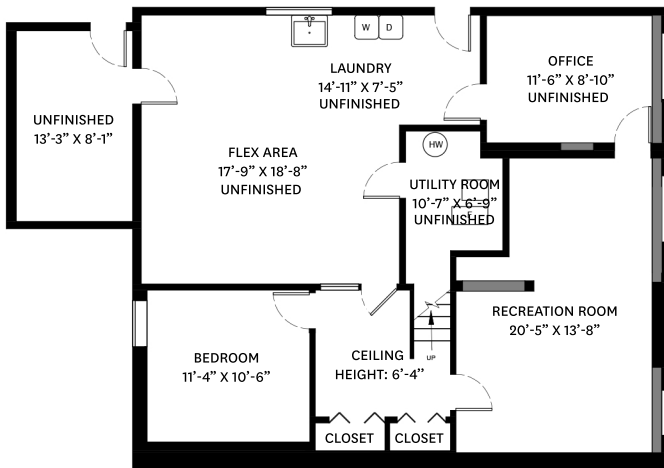
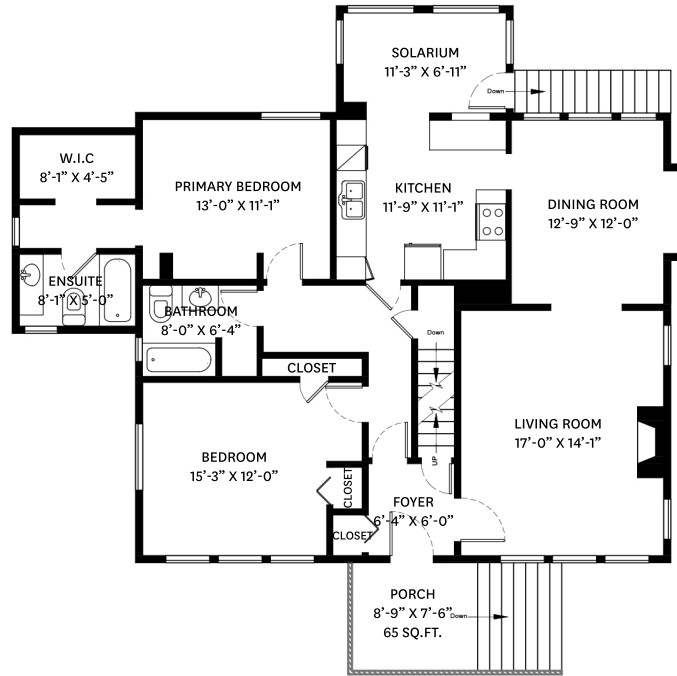


2169 WEST 35TH AVENUE, VANCOUVER, BC

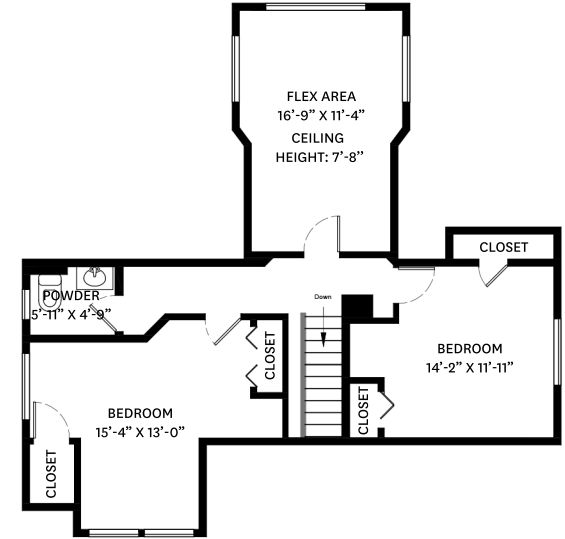
LOWER FLOOR TOTAL: 601 SQ.FT.
MAIN FLOOR TOTAL: 1,384 SQ.FT.
UPPER FLOOR TOTAL: 780 SQ.FT.
TOTAL: **2,765 SQ.FT.**
UNFINISHED TOTAL: 719 SQ.FT.
GRAND TOTAL: **3,484 SQ.FT.**
PORCH: 65 SQ.FT.



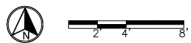
LOWER FLOOR PLAN
Ceiling Height: 6'-7"



MAIN FLOOR PLAN
Ceiling Height: 8'-11"



UPPER FLOOR PLAN
Ceiling Height: 7'-10"



Karel Palla PREC*
 604-329-1430
 kpalla@shaw.ca

Darryl Sjerven
 604-644-5920
 darrylsj@shaw.ca

floor plan designed by
 ishot.ca Enterprises Inc.
 604-368-7979
<http://ishot.ca>

*PERSONAL REAL ESTATE CORPORATION. THE FLOOR PLAN ILLUSTRATION IS NOT SUITABLE FOR CONSTRUCTION/ ARCHITECTURAL PURPOSES. MEASUREMENTS ARE APPROXIMATE AND MAY NOT BE TO SCALE. E&O INSURED.